

Package NETWORKS



DESCRIPTION

The development of network processes in the modern economy is a consequence of the increased interaction between its participants in local and international markets. In order to scale up the activities of the enterprise and increase income, the big and medium-sized commercial companies form additional structural divisions (*warehouses, service centers, new points of sale* etc.). These divisions, together with the head office, constitute a common economic network that mediates the effectiveness of each of its individual elements.

Therefore, the company management is faced with the question: where and how to locate the new structural division of the company with minimum costs and maximum benefit?

That is why our Center offers quick outsourcing testing of hypotheses about the need and effects to locate a new structural unit in the proposed location.



Where to locate a new warehouse to minimize operating costs?



Which of the existing divisions can be closed with minimal impact on others?

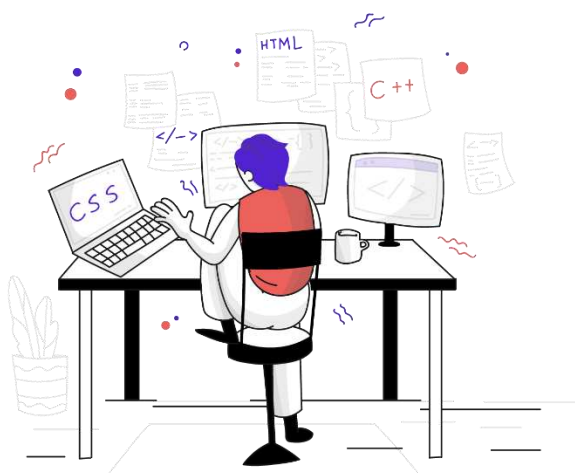


Where to locate the new division for maximize profit?

Our team answers these (**and not only these**) questions by working with your data using graph theory.

We provide expert and scientific support for the work of analytical department in your company.


Where you have doubts about the economic feasibility of placing or closing a structural division - our Center is ready to help with a solution and offer its scientific approach with detailed documentation.

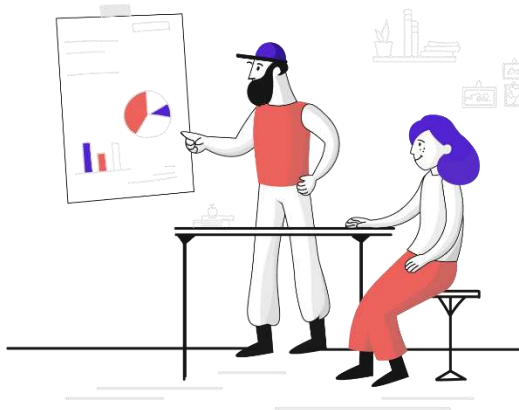


PACKAGE CONTENT

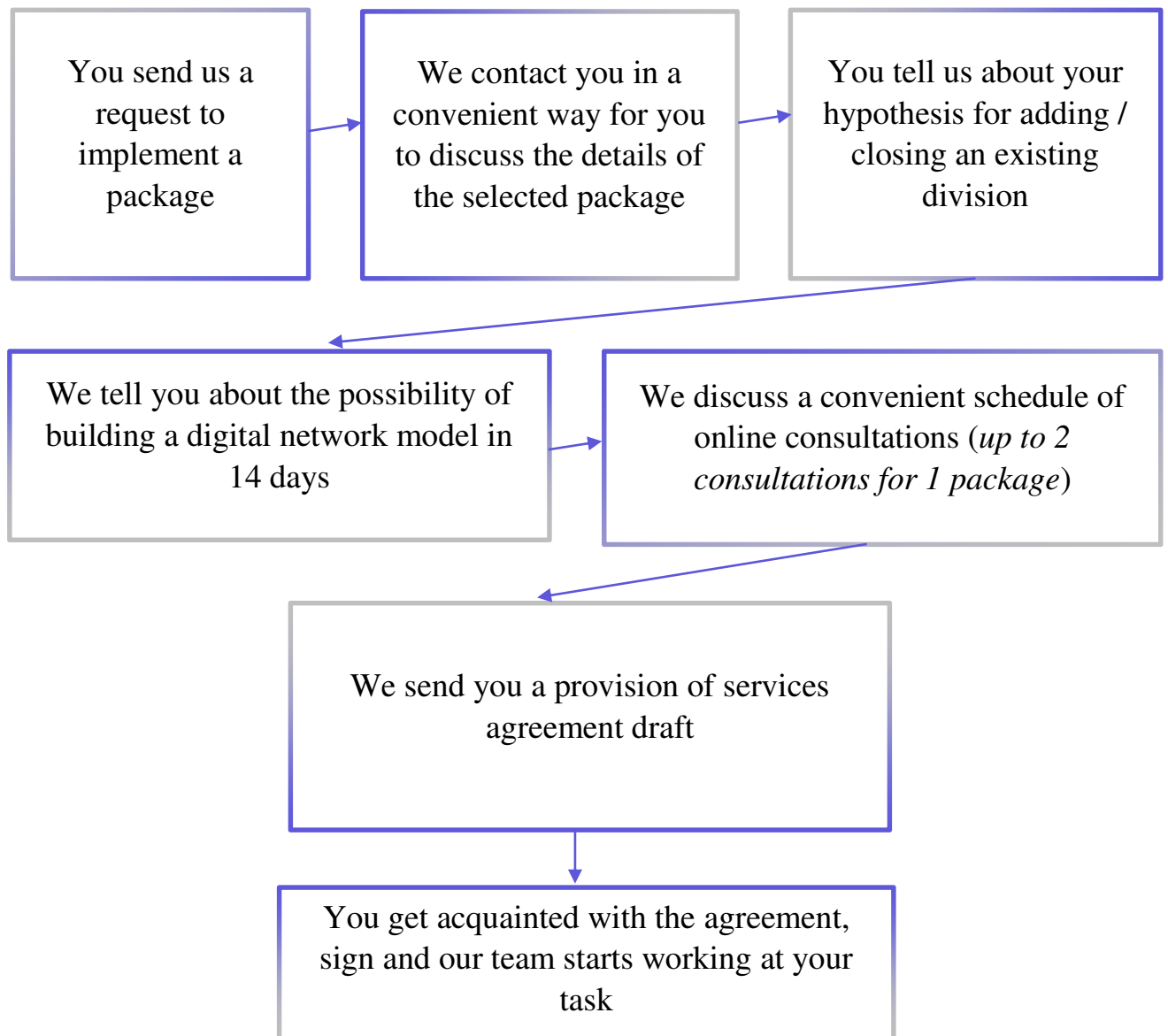
- 1 Initial analysis of available data
- 2 Making a digital model of interaction between structural divisions
- 3 Adding additional data to the map model
- 4 Testing a hypothesis
- 5 Final report in .ipynb and .pdf/.docx formats

DURATION

 up to 14 days



INTERACTION WITH CLIENT





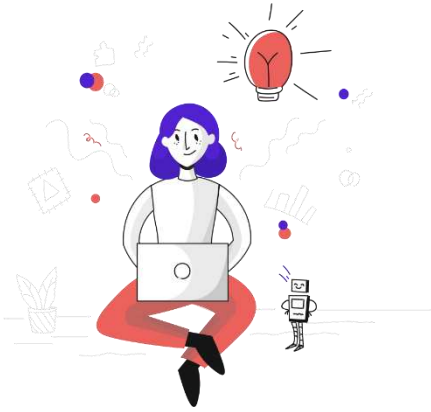
WORKFLOW

- +7** Our analyst team work on carrying out all the above stages of the package within 7 working days
- +1** After that, within 1 day, a code review of the work results takes place together with the project manager
- +2** Within 2 days, a final report is drawn up with a detailed description of model work
- +2** Next, the final models and work results are transferred to the client through the GitHub repository. For 2 days, the project manager interacts with the client (*answers to questions*)

METHODS

We will use the following formal methods with the resulting graph:

- Dynamic modeling and dynamic distance matrices
- Continuous and discrete optimization
- Random network models and Markov chains



ABOUT SERVICE SUBSCRIPTION

Our Center provides individual sets of services presented in the form of packages. In cases where the client's task or hypothesis requires longer work (*more than 14 days*) - we inform about this at the stage of discussing the available data (*before signing the provision of services agreement*) and propose to extend the selected package up to 28 days.

Also, if after selected package ending, the employees of your company need:

- > more time for formal and expert analysis of the model developed by us
- > test new hypotheses that emerged from the analysis of our final model
- > add additional divisions to the final model map

then you can always extend the selected package for another 14 days or conclude a contract for permanent service.

CONFIDE DIFFICULT TASKS TO COMPETENT SPECIALISTS

